

# Programming of control units

E4 rear engines etc.

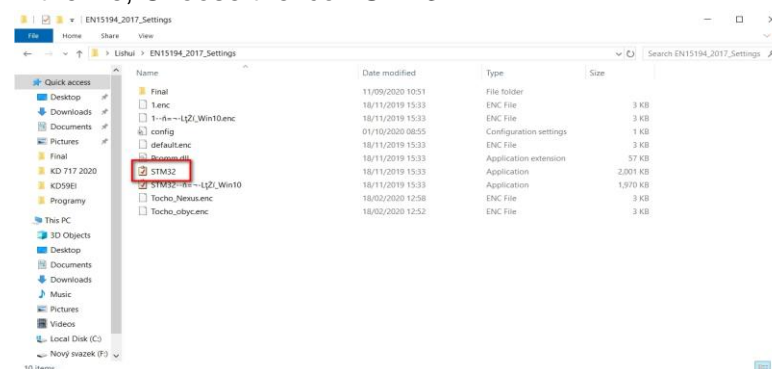
Use this programming tool (87227) to program control units.



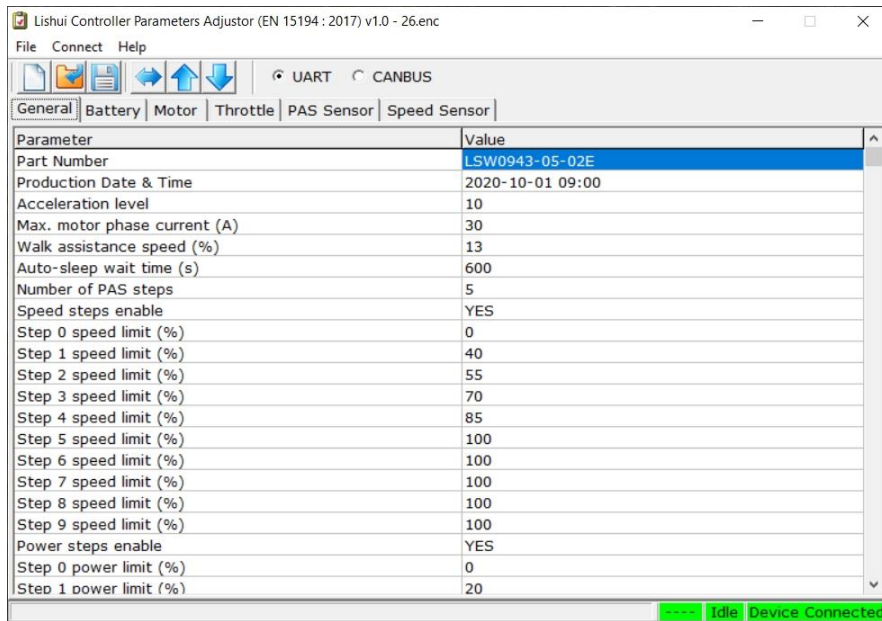
1. Choose the icon and connect the controller to your pc. Programming tool connect to control unit and EB-bus cable



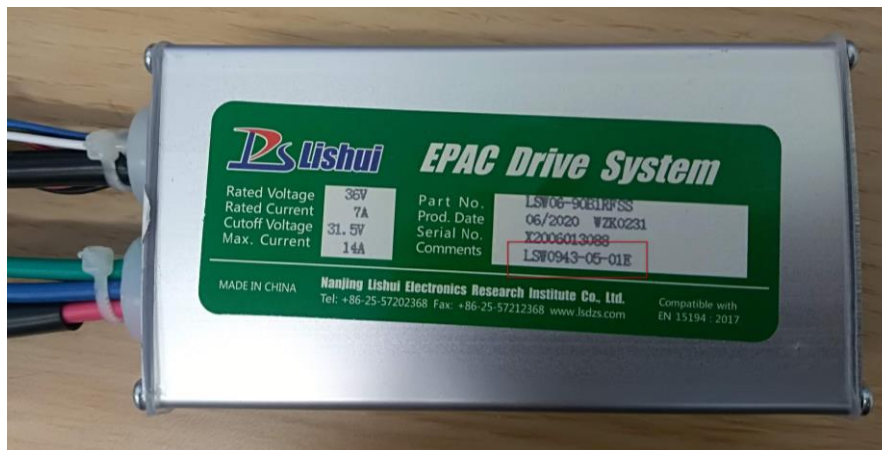
2. In the file, Choose the icon STM32

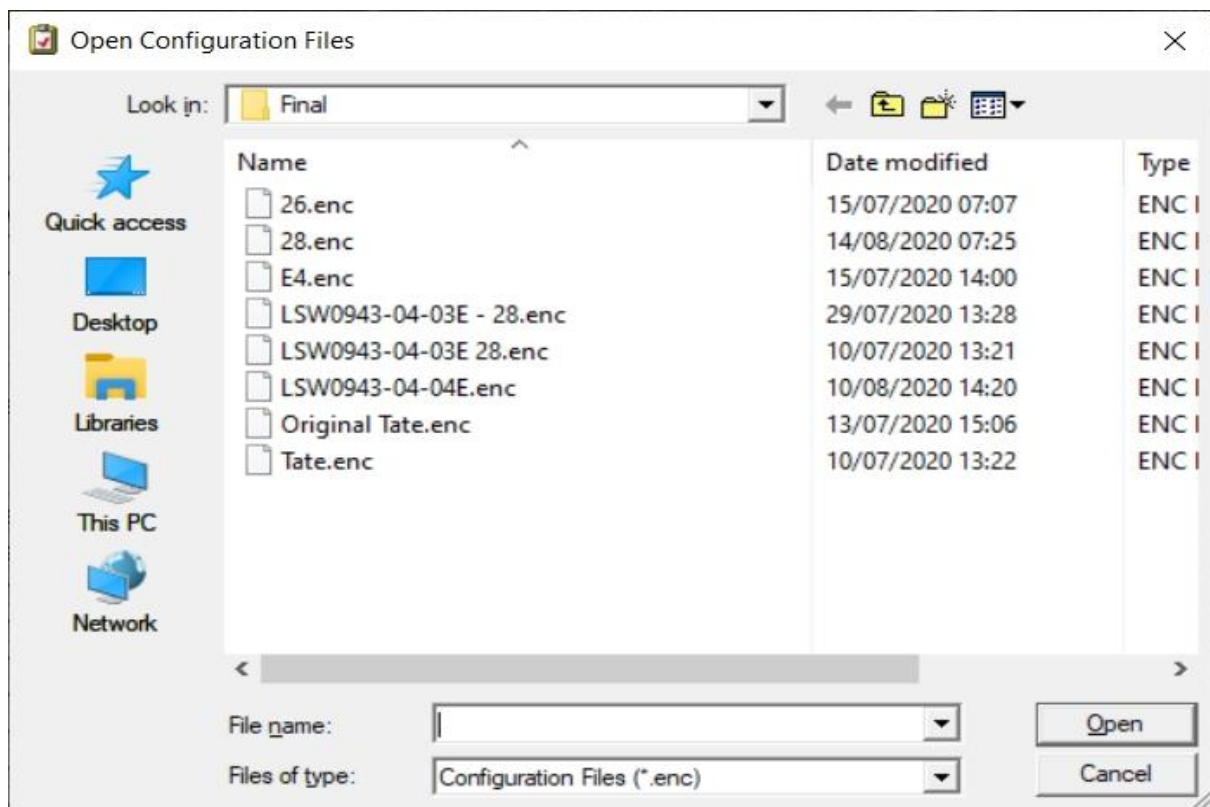
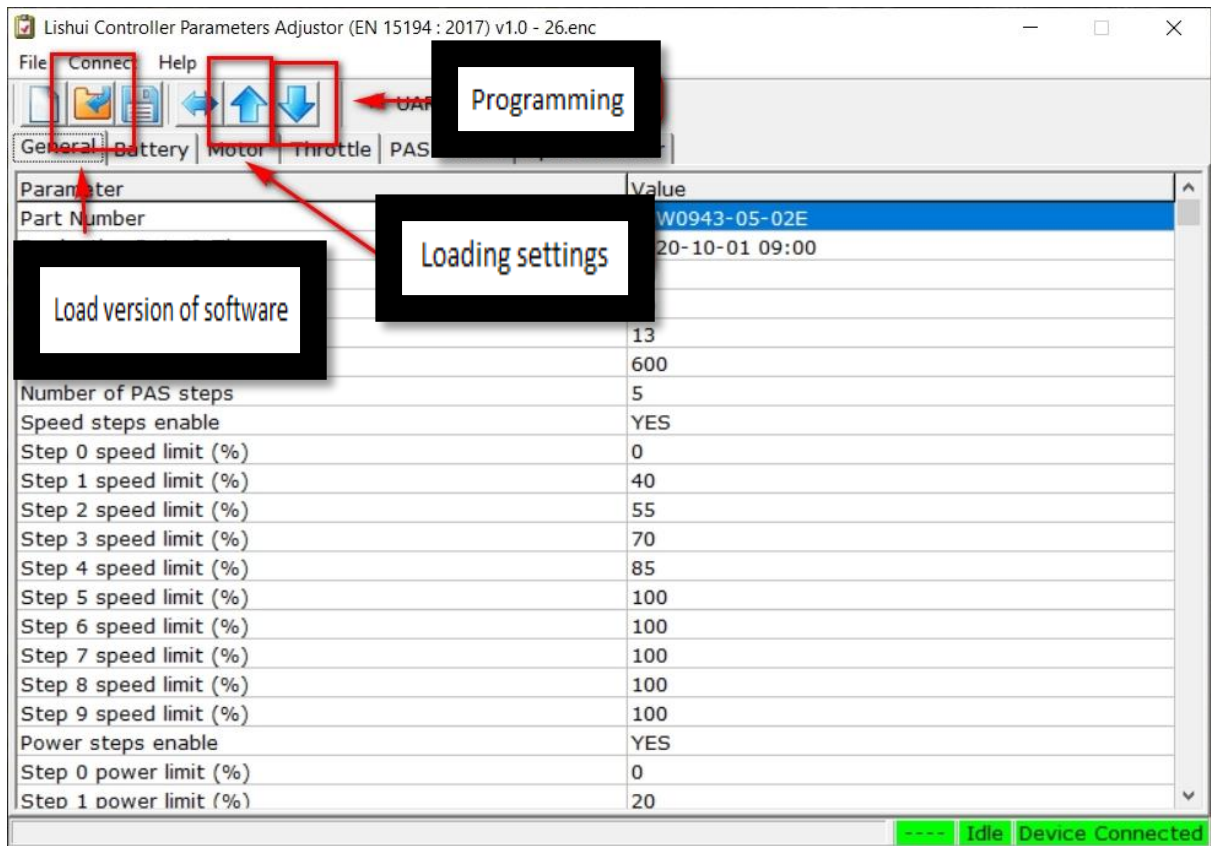


3. The application will be open.



4. Upload the right version of software. The software version is written on the label of the controller. Choose the right version from the list.





After selecting the software version via the programming button, update the unit.